



Applied Thinking,  
Sustainable Execution

A photograph of two male workers in an industrial setting. They are wearing blue long-sleeved uniforms with reflective green and white stripes on the sleeves, white hard hats, and safety glasses. The worker in the foreground is wearing white work gloves and is operating a red industrial machine. The worker in the background is also wearing safety glasses and is looking towards the same machine. The background is blurred, showing more industrial equipment and a person in a pink shirt.

YOUR PARTNER  
FOR SUSTAINABLE  
EXECUTION





EPT is a sustainable Engineering, Construction and Project Management Company with solutions across the upstream, midstream and downstream sector of the oil and gas and power industry.

EPT manages and participates in the entire project life cycle from Conceptual Design to Commissioning & Start-up as well as Operations and Maintenance.

Through our vast experience in the sector, we use fundamental principles to solve real industry challenges in the oil and gas sector while actively engaging all stakeholders to deliver an excellent result.

EPT offers uniquely customized product engineering solutions, which aggressively reduce the project's capital expenditures and duration, as well as guarantee the highest level of quality and reliability.





## VISION

Be a global choice in sustainable engineering, construction, and project management by delivering remarkable results for customers with outstanding people who enjoy their careers while satisfying sustainable economic returns.



## COVENANT & VALUES

**Simplicity** by always defining Who, What, Where, Why, When

**Partnership** with deep connection from Respect, Trust and Accountability toward our customers, employees and business for common good.

**Results** through agiles excellent and innovation from the third eye, learning transfer and applied thinking

**Sustainability** through inclusive consideration for people, environment, community, and economic progress



## PURPOSE

Sustainable execution for a long-term positive legacy





# SUSTAINABILITY





## HSE STANDARDS

Safety for our employees and the environment is our number one concern.

It is our ultimate goal to have all working hours completed safely. To ensure this happens, we train our employees to execute their jobs correctly and to cultivate an attitude of constant betterment.

We also recognize that it is our responsibility to consider the impact our industry has on the planet. We never stop searching for new technology and innovations to safeguard the health of our environment.



## QUALITY STANDARDS- ISO 9001-2015:

### Quality Management Systems

Our Quality Objectives;

To provide service to customers with maximum reliability

To ensure continuous improvement in the quality of processes and deliverables

To respect legal requirements and other applicable mandatory regulations

To demonstrate continuous professionalism and efficient delivery of services.





## Our Focus Areas

### EPT Consulting and Engineering

- Project Consulting (Maturation, Concept, and Feasibility Studies)
- Project Engineering and Design
- Project Management
- Manpower Supply

### EPT Flow Systems

- Pumps and Compressors
- Valves
- Separators
- Instruments and Control Systems

### EPT Construction and Marine Logistics

- Procurement
- Construction
- Marine Logistics
- Virtual Pipeline (Barging and Trucking)

### EPT Construction and Marine Logistics

- Well Testing and EPF
- Well Intervention
- Integrated Project Management





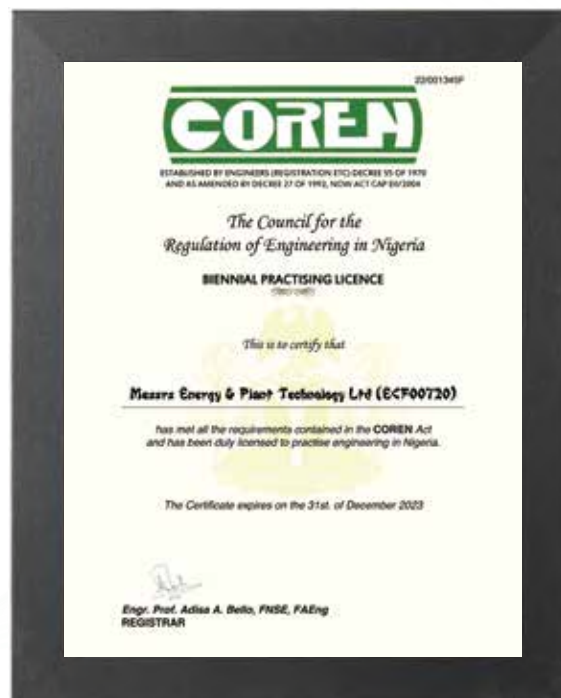


## EPT CONSULTING AND ENGINEERING

Our team creates a consulting scope to customize ideas and provide solutions for our customers onshore, swamp and offshore locations. Our technological capabilities, experience, and case studies guarantee the quality of study recommendations and engineering design from;

- Feasibility and Conceptual Studies
- Front-End Engineering Design
- Detailed Engineering Design

Our multidisciplinary, highly experienced, skilled engineers develop solutions that meet the client objectives. EPT is a COREN certified company, implementing Engineering activities in accordance with the latest Codes, Practices, Standards and Project Specifications.







# Project Management

The EPT Project Management team understands your business needs. Our in-house PMP experts and technical personnel have a proven track record of creating sustainable solutions to exceed your expectations.

Our project management commitment is to provide the right expertise to help ensure on-time, on-schedule project completion which gives us the competitive advantage. Our team has brings invaluable experience from the years in the Exploration and Producing com-

panies in the Oil & Gas sector and acquired knowledge from top International Servicing companies in the Oil and Gas industry and Contractors. Our perspective ensures we covers all sides.

We Provide Value-adding project management services from project planning, contracting strategies, project costing and scheduling, through construction and commissioning support using the Agile Project Management Approach







# EPT FLOW SYSTEMS

---

## PUMPS AND COMPRESSORS

Our machinery team established the practice as a leader in sales and service of compressors and pumps, including other related machinery equipment.

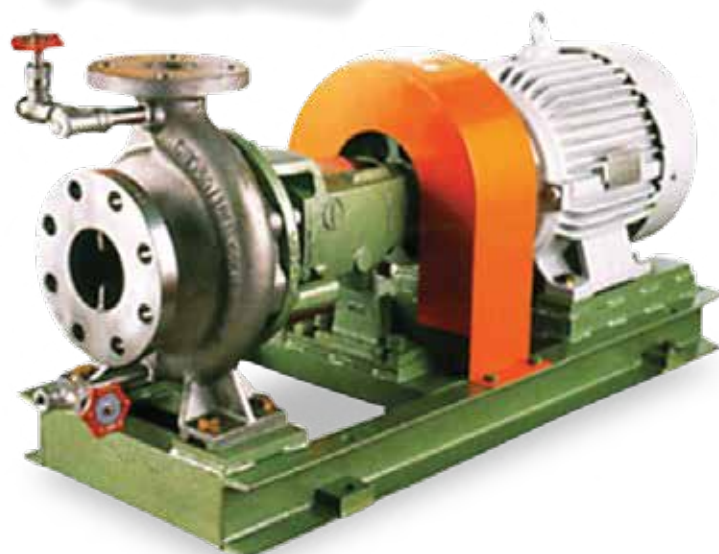
EPT enjoys a reputation for service and repair, providing prompt service in the field or in our well-equipped service center.

Services provided include:

- Procurement and Packaging
- Contract Maintenance and Repairs
- Installation,
- Engineering and Parts
- Solids Reduction
- Rental











Your **partner** for  
industrial **valves !!!**

We supply industrial valves for plant and pipeline applications and are used for shutting off, controlling, regulating, and securing.

EPT's Flow Control Systems specializes in  
3R VALVES services;

Repair | Recertification |  
Remanufacturing | to ASME standards.

**Our 3R Valves Program offers;**

- Rapid response time to field calls
- Replace and Repair (RR) Support
- Discounted Repair Cost
- Discounted spares inventories
- OEM qualified valves technicians





# SEPARATORS AND INTERNALS

Vessel Internals Are components which help to accomplish the functional objectives of the vessel such as phase separation, storage, thermal contacts, contacting (stagewise or differential) etc. Phase separation is ubiquitous in oil field operations and is accomplished in separators. Separators require various internals which perform different functions to meet targeted outcome. These separators are generally sized by the settling theory or retention time for the liquid phase. Depending on a specific application, oil/gas separators are also known as de-liquidizer or degasser, which are used to remove dispersed droplets from a bulk gas stream, while the degassers are designed to remove contaminated gas bubbles from the bulk liquid stream.

## Feature

- Longer life
- competitive price
- High efficiency
- Dimensionally perfect
- Smooth functioning

## Separator and Vessel Internals

- Inlet Diverters
- Sand Jet Pipes assembly for Conventional Sand

## Systems

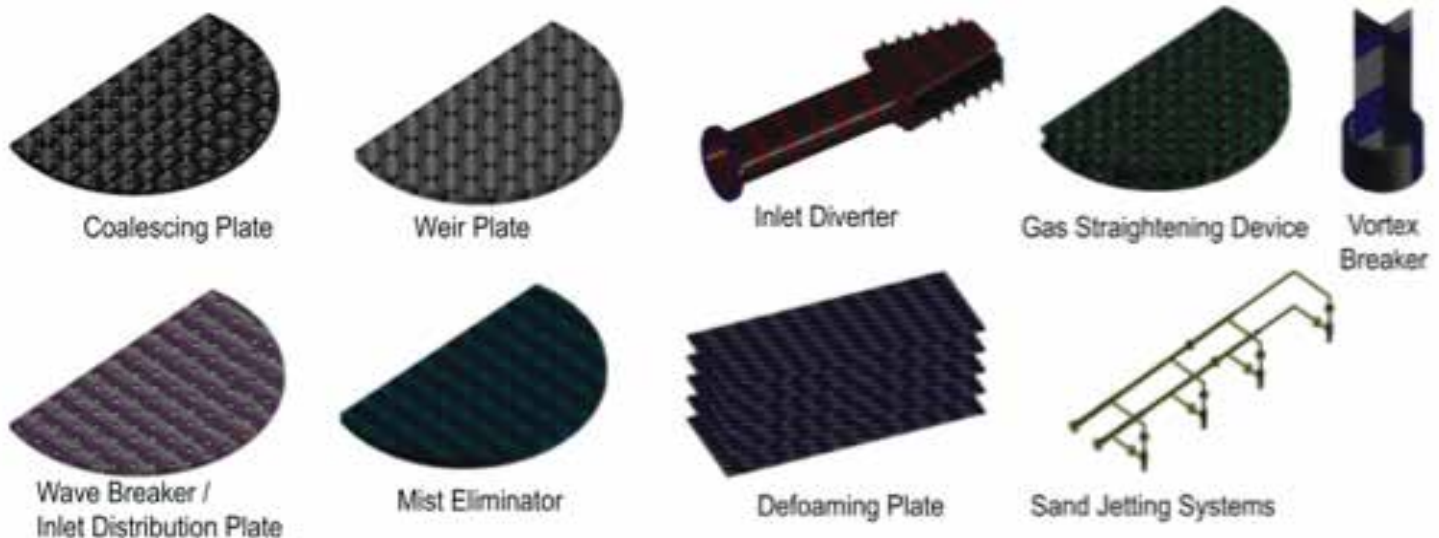
- Vortex Breakers (for liquid outlet lines)
- Vane Type Mist Extractors
- Carbon Steel Overflow Weir Plate
- Proprietary Desanding Octopus (made of polymer)

## Design Specifications and Delivery Strategy:

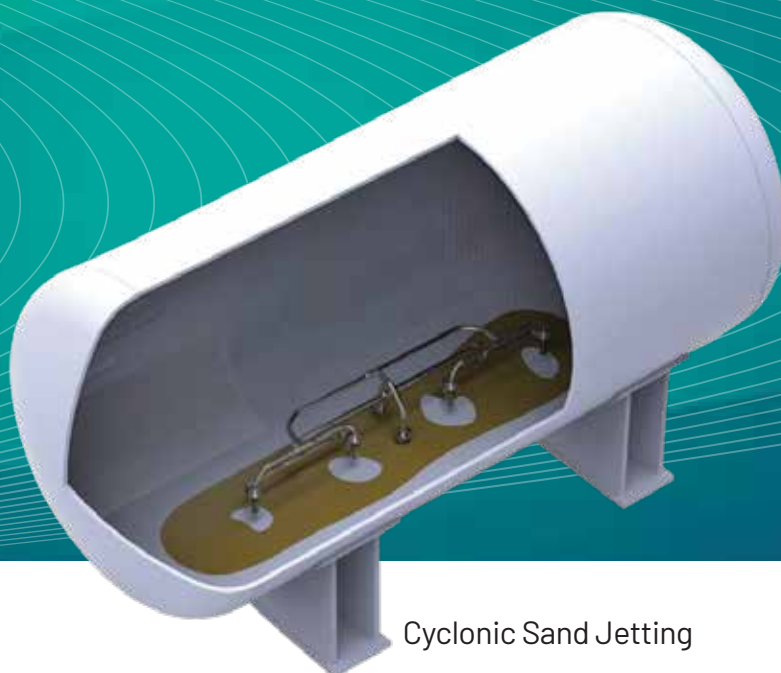
We design and fabricate vessel internals for new vessels. Our internals are fabricated with Carbon Steel and Stainless Steel depending on process requirements.

For in-field vessel modifications, internals are segmented into sections and the sections are able to fit through the existing manways. We also provide support angles, housing support rings etc and ensure easy attachment and fastening on vessel shell.

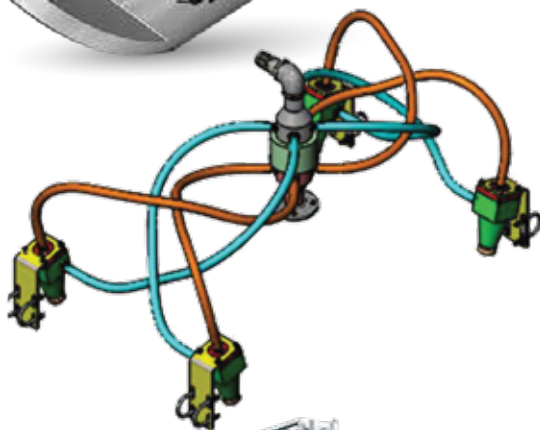
Internal Layout Drawings and vessel internal details are developed to aid the installation process.







Cyclonic Sand Jetting

Conventional  
SandJet System4 Way Octopus  
Manifold

- **Gas / Liquid Separation**

The droplets are extracted from a vapor stream through a series of actions: collision and adhesion to target coalesce into larger droplets and drainage of the contacting element.

- **Liquid / Liquid Separation**

For liquid / liquid separations, we offer flat special packs in a wide range of materials. Depending on the requirement they may be used alone or in combination for separating a wide variety of emulsions mechanically induced. All separating packs are built to customer specifications or performance and high-efficiency requirements and long reliable service.

- **Liquid / Gas separation**

- Mist Eliminator
- Candle Mist Eliminator
- Vane Mist Eliminator
- Chevron Mist Eliminator
- Vane Inlet Distributor (VID)



# EPT Instrumentation and Control Systems

From the design and supply of measurement and analysis equipment to design and implementation of general electrical and instrumentation systems and explosion-proofing systems, EPT supplies systems of all sizes for a diverse range of applications

- Measurement and analysis equipment design and supply
- Control systems planning, design, supply and maintenance
- Measurement and control systems design and implementation, including explosion-proof works





EPT's Instruments and Control System's team are trained and certified to handle several instruments:

- Micro motion mass flow meter
- Vortex flow meter
- Density meters
- Viscosity Meters
- Flow computers
- Gas Chromatographs
- Ultrasonic flow meters
- Fire & Gas devices
- Valve(Flow Control, Pressure Management, Isolation Valves, Actuation Technologies)

EPT Instrumentation and Control Systems offers a full range of Instrumentation and Control Systems services including system analysis, hardware, and software engineering design, control panel assembly, installation, testing, and commissioning.

- Calibration
- Instrumentation & Automation Control
- Control Panel Layouts
- Process Computers/DCM System Selection
- Programmable Automation Logic Controller

### **(PAC) Design & Programming**

- PAC Configuration
- Loop Diagrams & Analysis
- FAT (Factory Acceptance Tests)
- Logic Diagrams
- PLC to DCS Communication Design
- Field Calibration & Loop Checks
- System Requirements Specifications(SRS)



- DCS Configurations/Communications Architecture
- Distributed Control Systems (DCS)
- Instrument Specifications
- Instrument Writing Diagram Design

We have the following experienced personnel ready to support your services at any locations ;

Site/Supervisors Managers | Instrument engineers| Electrical engineers | Mechanical completion engineers | Rotating Equipment Engineer | Electrical / Instrumentation Technologist | Mechanical Technicians | Fitters





# EPT Construction and Marine Logistics

Our Construction and Marine Logistics business division is positioned to deliver integrated services to the energy and shipping industries. We also provide comprehensive solutions for our clients' needs and offer management expertise of third-party services for Offshore activities

## OUR SERVICES

- Procurement
- Construction
- Offshore Logistics Support Services
- Crude Oil Alternative Evacuation (Barging)







## Offshore Logistics Support Services

EPT is a specialist in offshore logistics, chartering and vessel agency services. Our in-house capabilities as an Integrated Project Logistics Services provider, specializing in Oil & Gas / Offshore Marine logistics, chartering, and Offshore (Support) Vessel agency services in Sub-Saharan Africa.

## Construction

We have extensive experience working with the area's unique geographical terrain and sensitive areas that may require more attention to protect the environment.

EPT employs skilled Supervisors, Foremen, Welders, Pipefitters, Operators as well as Safety and QC staff. Combined with our truck and equipment fleet, EPT is able to provide turnkey, one-stop services for your project.

## Procurement and Supply Chain Management Services

Our Procurement services provide the best value from OEMs to customers by leveraging global sourcing networks and market knowledge.

Some of the equipment and products we supply include the following;

- Fiscal Measurement and Custody Management Systems such as LACT Units, Tank Gauges
- Process Equipment such as Vessels, Compressors, Pumps, Valves, etc.
- Field Instrumentation such as Gauges, Transmitters, etc.
- Chemicals such as Corrosion Inhibitors, Drilling Fluids, Productions Chemicals and Additives
- Lightning and Surge Protection Equipment







# EPT Virtual Pipeline

## Crude Oil Alternative Evacuation (Barging & Trucking)

Our end-to-end approach considers delivering alternative crude oil evacuation to meet optimum cost and other performance parameters. Our logistics professionals provide the required project management.





## Surface Well Testing and Early Production Facilities

EPT can offer integrated well-testing services with mobile units & clamp on the meter, in the exploration, appraisal, and development phases of oil and gas wells. We aim to provide newer, faster, and more precise testing results through innovation and superior service quality.

### Services

- Surface well testing on field
- Extended Well testing
- early production facility service
- In-field sound management
- Multi-Phase Flow Metering (MPFM)
- Water treatment and disposal Services

### Equipment

- Separators, Surge Vessel, Flare Knock out
- Wellhead de-sander skids
- Well testing integrated trailer packages
- Smokeless burners
- Zero flaring packages
- Flare stacks various heights and sizes
- Offshore burner booms,
- Downhole and surface PVT sets
- Radioactive and non-radioactive MPFMs







# EPT Energy, Gas and Power

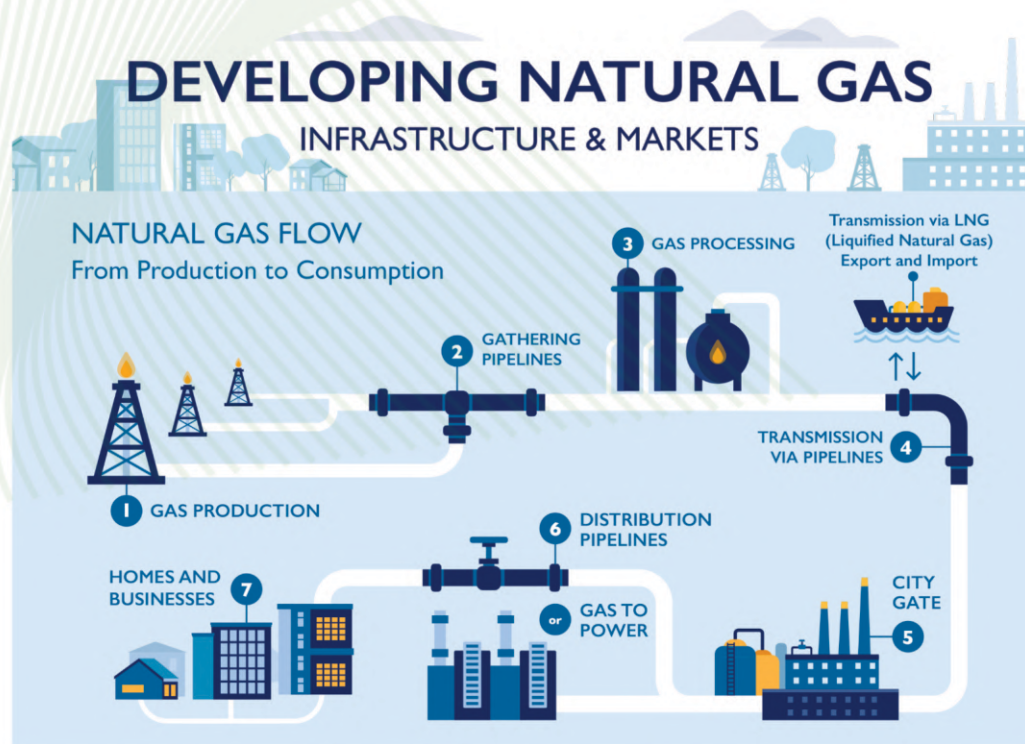
## Gas to Power Delivery

At Energy and Plant Technology Limited (EPT), we recognize the increasing significance of natural gas as a cleaner and more sustainable energy source, particularly given the abundance of natural gas resources in Nigeria.

### Empowering a Sustainable Future with Expertise and Insight

We are committed to applying our expertise in engineering, construction, and project management to become your capable partner in developing and delivering gas-based power solutions. We also understand the commercial challenges, including funding, that can impede unlocking the full value of such projects. Whether it involves establishing gas infrastructure, constructing gas-fired power plants, or optimizing existing gas-to-power systems, EPT possesses the knowledge and experience to ensure successful project execution.





### Our Gas to Power Delivery services encompass:

#### 1. Gas Resources Development and Flare Gas Monetization.

We apply our petroleum asset management and development expertise to develop gas resources in a cost effective manner. We support operators and asset owners in unlocking their gas resources, providing comprehensive planning and delivery assistance for non-associated gas development. Additionally, we offer flare gas monetization solutions. Including compression, treating, injection into pipelines or evacuation as compressed natural gas (CNG). Our goal is to maximize the value of gas resources while minimizing waste and environmental impact.

#### 2. Gas Supply and Delivery Infrastructure :

At EPT, We specialize in the supply of natural gas to required locations and design and construction of gas processing, transmission and distribution. Working closely with our clients, we create efficient and reliable gas infrastructure tailored to their specific needs. Leveraging our network in the gas market, we serve our clients by providing and supplying gas while meeting the terms of our Gas Supply Agreements (GSAs). We guarantee delivery of natural gas to power generation facilities.





### 3. **Gas-Fired Power Plant Construction and Modifications:**

EPT proudly boasts a proven track record in the construction of gas-fired power plants. We offer end-to-end project management services that cover site preparation, equipment procurement, civil works, mechanical and electrical installations, and commissioning. Our expertise ensures that gas-fired power plants are built to the highest standards, with a strong focus on efficiency, reliability, and environmental sustainability.

As part of our Gas to Power Delivery services, we assist clients in converting their existing power plants to operate on natural gas. This conversion enables cleaner and more cost-effective power generation, reducing emissions and improving overall operational efficiency. EPT handles all aspects of the conversion process, including comprehensive feasibility studies, engineering design, equipment retrofitting, and seamless system integration.







# EPT Energy and Power Consulting

Empowering a Sustainable Future With  
Expertise and Insight

We offer comprehensive Energy and Power Consulting services designed to help clients navigate the evolving energy landscape, make informed decisions, and maximize the value of their energy assets using the resources and opportunities available to them. Our services cater to governments, public and private sectors, policymakers, and more. With our deep industry knowledge and multidisciplinary approach, we provide strategic insights and practical solutions to address the challenges and opportunities in the energy and power sectors.



## Our Gas to Power Delivery services encompass:

### 1. **Public and Private Sector Energy Security Strategy Development:**

EPT supports the development of Energy Security Strategy/Programs for both public and private sectors. Our team of experts collaborates closely with stakeholders to assess energy needs, identify potential risks and vulnerabilities, and develop a comprehensive strategy to ensure energy security for our clients. Leveraging our technical expertise, industry insights, and stakeholder engagement skills, we deliver a strategy that promotes sustainable and reliable energy supply.

### 2. **Energy Market Analysis and Planning:**

EPT provides in-depth analysis of energy markets, helping clients understand market dynamics, trends, and regulatory frameworks. We assist in formulating energy market strategies, investment planning, and risk assessment to optimize decision-making and support long-term business objectives. Our goal is to help our clients stay ahead in a rapidly changing energy landscape.

### 3. **Renewable Energy Integration:**

As renewable energy sources gain prominence, EPT offers consulting services to help clients seamlessly integrate renewable energy into their power systems. We conduct thorough feasibility studies, evaluate technology options, and provide expert recommendations for incorporating solar, wind, or other renewable sources into existing or new power generation facilities. Our focus is on ensuring a smooth transition to a more sustainable energy mix.